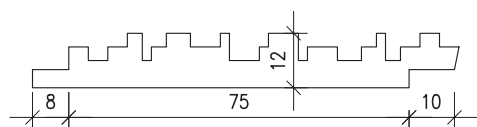
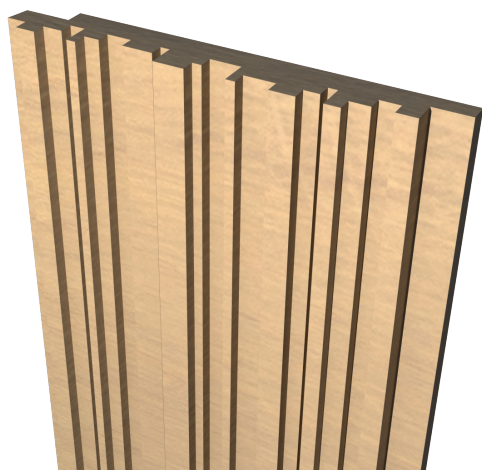


# TAY

## SOLID TIMBER WALL PANELS



### TAY Profile - Half Lap option



**Raw Material:** Solid Timber

**Randomised lengths:** Sold per m<sup>2</sup>

**Standard widths:** 93mm

**Standard thickness:** 12mm

**Standard cover:** 85mm

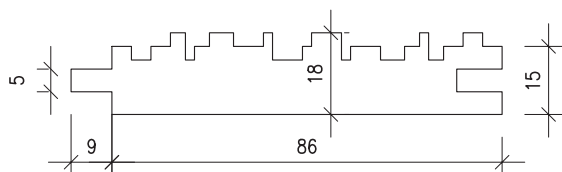
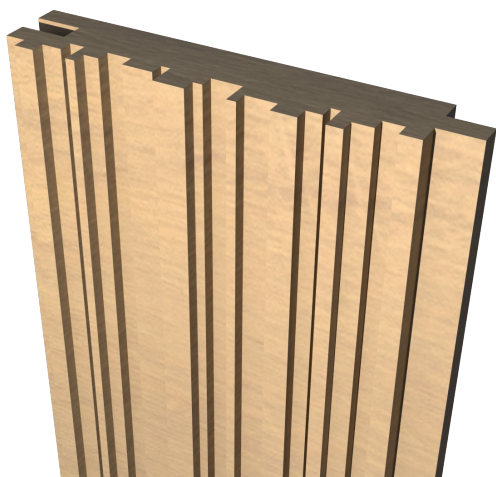
**Method of fixing:** Adhesive / Pinning

Sizes are subject to change in response to changes in moisture levels.

SKELF panels will be dispatched at given sizes, but a margin of error should be used when producing layout drawings for expansion and contraction in the timber.

We are in regular consultation with the Scottish Timber Trade Association. The species listed may vary throughout the year based on UK sustainable growth patterns.

### TAY Profile - Tongue and Groove option



**Raw Material:** Solid Timber

**Randomised lengths:** Sold per m<sup>2</sup>

**Standard widths:** 95mm

**Standard thickness:** 18mm

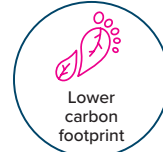
**Standard cover:** 86mm

**Method of fixing:** Adhesive / Pinning

Sizes are subject to change in response to changes in moisture levels.

SKELF panels will be dispatched at given sizes, but a margin of error should be used when producing layout drawings for expansion and contraction in the timber.

We are in regular consultation with the Scottish Timber Trade Association. The species listed may vary throughout the year based on UK sustainable growth patterns.



SKELF is a trading name of SCENENGINEERING  
74 Hydepark Street, Glasgow, G3 8BW  
enquiries@skelf.scot  
www.skelf.scot



Supply Chain Certification